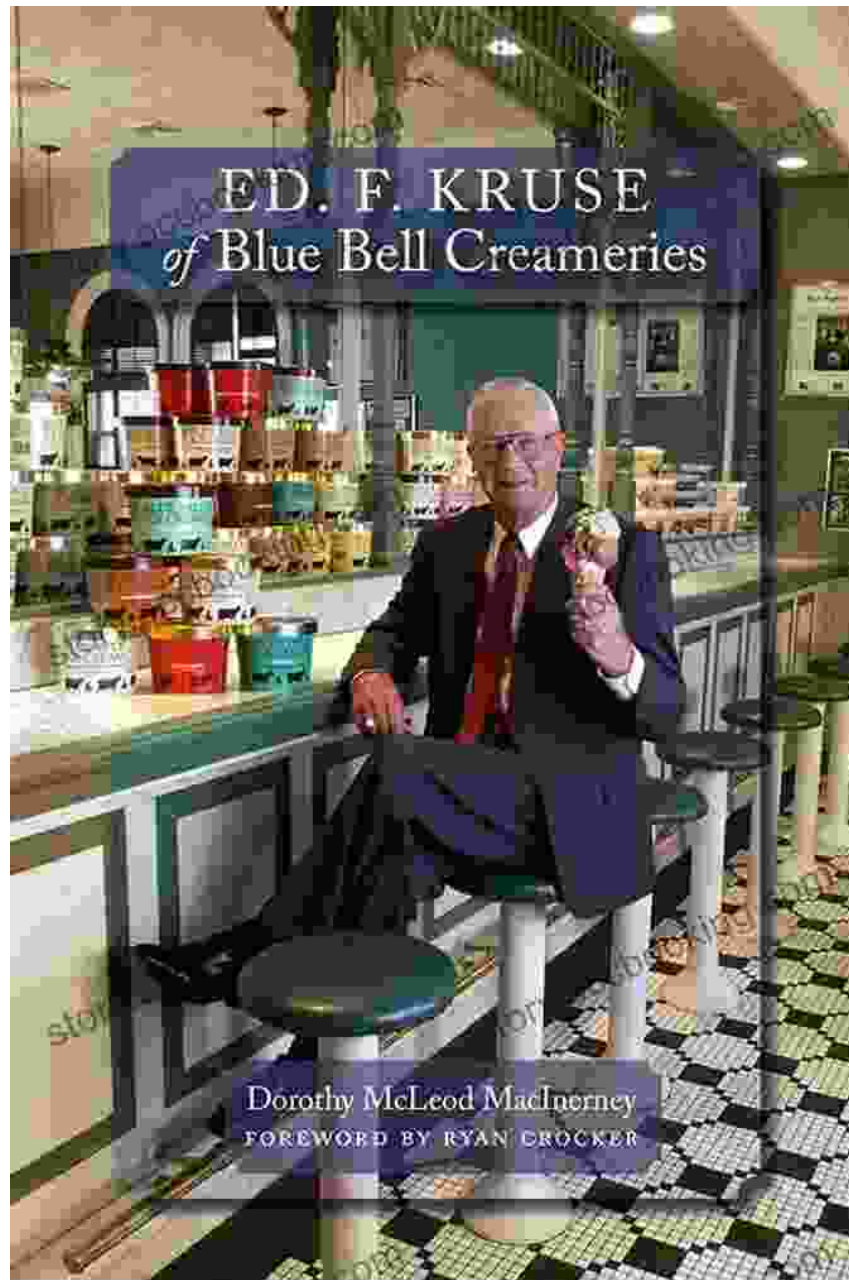


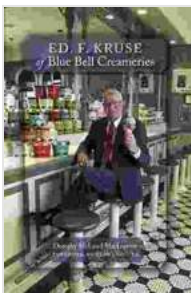
# Ed Kruse Of Blue Bell Creameries: The Dairy Innovator Who Changed the Game



## From Humble Beginnings to Dairy Dominance

Ed Kruse was born into a farming family in Brenham, Texas, in 1887. With a keen interest in agriculture, he began working at a local creamery at the

age of 14. It was here that Kruse's passion for dairy production ignited.



## Ed. F. Kruse of Blue Bell Creameries by Randall E. Stross

★★★★★ 5 out of 5

Language : English  
File size : 11855 KB  
Text-to-Speech : Enabled  
Screen Reader : Supported  
Enhanced typesetting : Enabled  
Word Wise : Enabled  
Print length : 207 pages



In 1907, Kruse partnered with RL Smith to establish Blue Bell Creameries in Brenham. The company's name was inspired by the abundant bluebells that grew wild in the region.

### **Innovation and Expansion**

Kruse's innovative spirit quickly set Blue Bell Creameries apart. He introduced modern pasteurization techniques, ensuring the safety and shelf life of their products. He also invested in state-of-the-art equipment, including a butter churn capable of producing 2,000 pounds of butter per day.

As Blue Bell's reputation grew, Kruse expanded the company's reach. He established new creameries and distribution centers throughout Texas and neighboring states. By the 1930s, Blue Bell had become one of the largest dairy companies in the Southwest.

### **The Home of Homemade Goodness**

Kruse believed that ice cream should taste like it was made at home. He insisted on using only fresh cream and the finest ingredients. This commitment to quality earned Blue Bell a loyal following among consumers.

Kruse also focused on creating innovative flavors. He created Blue Bell's signature "Homemade Vanilla" ice cream, using a secret family recipe that remains unchanged today. Other popular flavors developed under Kruse's leadership included "Chocolate Peanut Butter Cup," "Neapolitan," and "Banana Pudding."

## **A Legacy of Success**

Ed Kruse's vision and leadership transformed Blue Bell Creameries into a dairy powerhouse. He left behind a legacy of innovation, quality, and customer satisfaction that continues to guide the company to this day.

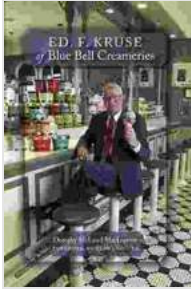
Kruse passed away in 1969, but his spirit lives on through Blue Bell Creameries. The company remains one of the most beloved and respected brands in the dairy industry, serving generations of Americans with its delicious and wholesome products.

Ed Kruse was a visionary entrepreneur who revolutionized the dairy industry. His innovative ideas and unwavering commitment to quality made Blue Bell Creameries an American icon. His legacy continues to inspire dairy enthusiasts and remind us that even the simplest of foods can bring joy and nourishment to our lives.

**Ed. F. Kruse of Blue Bell Creameries** by Randall E. Stross

★★★★★ 5 out of 5

Language : English

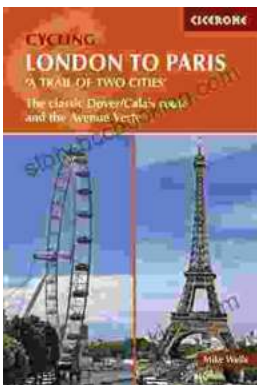


File size : 11855 KB  
Text-to-Speech : Enabled  
Screen Reader : Supported  
Enhanced typesetting : Enabled  
Word Wise : Enabled  
Print length : 207 pages



## Short, Skinny Mark Tatulli: The Ultimate Guide to a Leaner, Healthier You

Are you tired of being overweight and unhealthy? Do you want to lose weight and keep it off for good? If so, then Short, Skinny Mark Tatulli is the book for...



## Embark on an Unforgettable Cycling Adventure: The Classic Dover Calais Route and the Enchanting Avenue Verte

Explore the Timeless Charm of England and France by Bike Prepare to be captivated as you embark on an extraordinary cycling journey along the...